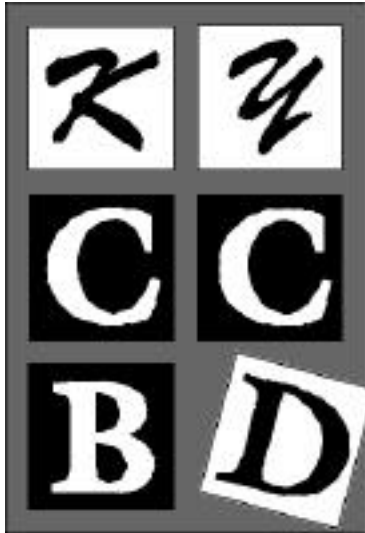


# The Newsletter of the *Kentucky Council for Children with Behavioral Disorders*



## KY-CCBD Executive Board Renews the Membership Drive

Due to the success of last year's membership drive, we have decided to offer it again.

For the first 100 NEW MEMBERS to sign-up and pay their CEC

dues (\$74.00) at the Summer Institute, KY-CCBD will sponsor the initial cost for joining the CCBD sub-division. This is a \$22.00 value.

Please let your friends and colleagues know that we want them to be participating members of the #1 Sub-division in CCBD.

Spread the word! Joining CEC and KY-CCBD has just gotten easier and less expensive!

Remember, this is for NEW MEMBERS ONLY who sign up during the Summer Institute. Once you write that check for \$74.00, KY-CCBD will cover the initial cost of joining the CCBD sub-division.

**REMEMBER THAT THIS IS FOR  
FIRST TIME, NEW MEMBERS  
ONLY.**

## President's Message

Donna Meers

Greetings everyone! I hope all of you had a wonderful and restful spring break. This time of year, we all need time off from our busy and often stressful schedules, so

we may re-energize ourselves to tackle the remainder of the school year! Thank you all for your hard work and dedication to promoting and facilitating the education and general welfare of children and youth with emotional and behavioral disorders. The time and effort you spend teaching students new and more appropriate behavior is appreciated!

KYCCBD has taken little time to rest this year. We have been involved in many activities to serve you and children and youth with EBD. I would like to highlight the professional development, membership, and advocacy items in which we have been involved.

**Professional Development.** As mentioned in our last newsletter, KYCCBD organized a behavioral strand at the **Exceptional Children's Conference** in November. KYCCBD provided 13 sessions related to behavioral issues. These sessions were well attended and feedback from participants was positive. Thank you to the KYCCBD members and others who agreed to share their experience and expertise!

In addition, KYCCBD organized a pre-conference day and a behavioral strand at the **Kentucky Council for Exceptional Children's Conference** in February. The pre-conference day was a huge success! Over 70 participants left with the message, "Effective instructional techniques to teach both academic and social skills" are the keys to success! The 11 sessions related to behavioral issues also highlighted this message! Again, thank you to the KYCCBD

## **INSIDE**

- 4** KyCCBD General Meeting Minutes March 3, 2000
- 5** T-Shirt Give-Away Announcement
- 5** Letter from KYCCBD Board to KY-CEC Board
- 6** Remarks from Beverley Johns
- 7** Nominations Announcement

members and others who agreed to share their experience and expertise!

Now for the news I know you all have been waiting for—**The Behavior Institute 2000!** The Behavior Institute is one of our major professional development projects of the year, and, I assure you, we have been working diligently to make this one of the best Institutes ever! Because of a scheduling conflict with the Hyatt in Louisville, The Behavior Institute will be held at the **Northern Kentucky Convention Center in Covington, Kentucky on June 26-28, 2000.** As before, KYCCBD members have the first “shot” at registration and are provided a reduced registration fee of \$50.00 (\$65.00 less than non-members). This year, we are increasing the number of participants to 1,400! However, registration will continue to be “first-come, first-served,” so please turn in your registration materials as soon as possible!

We think you will be excited about the nationally recognized speakers we have invited to present at the Institute this year. Acting on a request from one of our members, **Dave Pelzer** will be our keynote speaker! As a child, Dave endured the horrors of child abuse, which included physical torture, mental cruelty, and near starvation. Upon Dave's rescue, he was identified as one of the most severely abused children in California's history. At age 12, Dave's teachers risked their careers to notify the authorities and saved his life. Dave has written three books based on this horrible experience, [A Child Called It](#), [The Lost Boy](#), and [A Man Named Dave](#). The keynote is scheduled for the **morning of June 26<sup>th</sup>** and is a gift to you, THE REAL HEROES, from KYCCBD. Dave has agreed to autograph his books immediately after the keynote so don't miss this rare opportunity!

**Anita Archer** is another speaker you won't want to miss. Anita is a nationally recognized expert in strategy instruction. Her first book, [Skills for School Success](#), is designed to teach elementary students management of time, good homework habits, key reference and study skills, and appropriate behaviors for before, during and after class. Her second book, [Advanced Skills for School Success](#), is written to teach secondary students school behaviors and organization skills, completing daily assignments, effective reading of textbooks, and learning from verbal presentations and participating in discussions. You will not want to miss her sessions!

**Mary Jenson** will be at the Institute this year presenting positive strategies for students who are aggressive and non-compliant, and in youth gangs. She will share “real-life” practical experience in dealing with hostile and aggressive gang-oriented youth in the classroom, at home, and on the street. Her book, [GANGS- Straight Talk, Straight Up](#), provides practical ideas and strategies you will be able to use!

**Malcolm Smith** has also agreed to present this year. His presentations will involve strategies for peaceful intervention and de-escalation techniques for angry children and youth. We have gotten great feedback from administrators and teachers concerning his presentation. You won't want to miss these sessions!

**Kim Marcum** will do presentations on proactive school-wide instructional discipline strategies. She is the co-author of the [Administrator's Desk Reference of Behavior Management](#) that includes a leadership guide, discipline referral and solutions, and meaningful work strategies. Kim presented at the Institute several years ago and was fabulous!

**Lucille Eber** is a nationally know expert in wraparound planning. She will present strategies to develop school-based wrap-around planning in collaboration with multidisciplinary agencies. These strategies are necessary for our most intensive students to succeed. Lucille has presented at the Institute before and has great ideas that work!

We are still waiting to hear from several others, so check on the Web at <http://www.state.ky.us/agencies/behave/homepage.html> for further updates! In addition to the speakers mentioned above, master Kentucky teachers and other professionals will be sharing their experience and expertise. You don't want to miss out on this fantastic learning experience!

**Membership.** As mentioned in the last newsletter, my goal for this year is to increase member involvement. As part of that effort, our regional representatives will be conducting a membership survey by phone. This phone call is your opportunity to let us know how we can best serve you. Please let the representative know your wants, needs, or frustrations. The only way we can improve is for you to let us know! As always, you are welcome to email me at

[donnameers@home.com](mailto:donnameers@home.com). We would love to have member assistance at the Behavior Institute. Please let your regional representative or me know if you would like to help!

**Advocacy.** You all have been informed of our advocacy efforts concerning the revision of the EBD definition in the Kentucky special education regulations. Thank you to all the members who have tirelessly volunteered their time! In addition, I would like you all to know KYCCBD fully supported the efforts of KyCEC and KyCASE to advocate for a reduction of paperwork and the addition of a statement regarding caseloads for special education resource teachers. I assure you KyCEC was informed about our support on these two issues. Now I would like to shortly review our activities to this point.

Following the mission of our subdivision (and National CCBD) and based on positions of National CCBD, KYCCBD executive board passed a motion to become involved in the advocacy of students with EBD in Kentucky. In October, a position letter was written concerning the revision of the EBD Definition. Based on the KYCCBD mission and positions of National CCBD, the executive board voted that this position be based on empirically published research and professionally published information relative to this subject. We mailed this position letter to Mike Armstrong at KDE, published the letter in the newsletter, and posted it to the KYCCBD Web site in October. In this newsletter and on the Web, we asked that all KYCCBD members support this position.

As a continuation of this advocacy effort, KYCCBD submitted written and verbal testimony at a public hearing in Frankfort on January 21st. The executive board voted to send an "Action Alert" letter to our entire membership to inform and to ask for their support prior to this testimony. As before, the executive board's testimony was based on empirically published research and professional material relating to EBD. Again, thank you to those members who testified or who submitted written testimony in support of this effort.

After this hearing, the definition of EBD still mirrored the current definition. However, the first week of March, this definition changed to include two federal characteristics and an exclusionary clause. On March 26<sup>th</sup>, the

KYCCBD executive board passed a motion to submit written and verbal testimony at the Kentucky Board of Education meeting held in Owensboro, Ky. on March 30<sup>th</sup>. Our position remained the same (i.e., retain the current Ky. EBD definition), but also provided suggestions for revising the compromise definition to clarify that, when chronic, behavior is a disabling condition. The following definition was approved by the Kentucky Board of Education on March 30<sup>th</sup>:

"Emotional-behavioral disability (EBD)" means that a child, when provided with interventions to meet instructional and social-emotional needs, continues to exhibit one or more of the following, when compared to the child's peer and cultural reference groups, across settings, over a long period of time and to a marked degree:

- (a) severe deficits in social competence or appropriate behavior which cause an inability to build or maintain satisfactory interpersonal relationships with adults or peers;
- (b) severe deficits in academic performance which are not commensurate with the student's ability level and are not solely a result of intellectual, sensory, or other health factors but are related to the child's social-emotional problem;
- (c) a general pervasive mood of unhappiness or depression; or
- (d) a tendency to develop physical symptoms or fears associated with personal or school problems.

This term does not apply to children who display isolated (not necessarily one) inappropriate behaviors that are the result of willful, intentional, or wanton actions unless it is determined through the evaluations process that the child does have an emotional-behavioral disability.

We hope the addition of this exclusionary clause will not deny children access to services. Historically in Kentucky, professionals tend to look at the exclusionary clause first and automatically exclude children from the

referral/evaluation process. We want our membership to understand that the exclusionary clause does not automatically exclude groups or subgroups of children based on a mental health diagnosis (e.g., conduct disorder, oppositional defiant disorder).

As you can see, we have been busy this year! I'll look forward to hearing the results of our membership survey! Thank you to all members who have presented at state conferences, participated in our membership survey, and/or written letters to advocate for students with EBD! We appreciate you and your volunteer involvement!

### What Do You Walk On?

When William Pitt was Prime Minister of Great Britain, he moved about painfully on crutches. A man came to him one day complaining that he had been given an impossible task. In response, Pitt picked up his crutches shook them at the man. "Impossible, sir?" he shouted. "I walk on impossibilities."

**KyCCBD General Meeting Minutes  
March 3, 2000**

The KyCCBD General Meeting met at KyCEC Conference at the Executive West, Louisville, Kentucky.

**Attending: Carol Rush, Alan Siegel, Toyha Robey, Laura McCullough, Donna Meers, Bill Rigney, LaNell Taylor, Tom Denton, Terri York, Linda Phillips, and Barbara Ungvary.**

**Convened:** 4:33 p.m.

**Topic:** Partnership with KyCEC in the Exceptional Children's Conference **Action:** Received our check from Bill Porter for our partnerships share in the ECC conference.

**Topic:** Minutes

**Action:** Minutes were approved at the Executive Board Meeting, February 26, 2000.

**Topic:** Institute 2000

Discussed the Institute and requested input regarding topics by the general membership. Informed membership of having Dave Pelzer as our Keynote. **Action:** Discussion only.

**Topic:** Advocacy Issues

Discussed our continued advocacy for children

with emotional and behavior disorders. The current discussion of the regulations and pending possible changes were reviewed and KYCCBD's stand on this issue.

**Action:** Discussion only.

**Topic:** Teacher of the Year Award

**Action:** Discussion only.

**Topic:** Benefits of Membership in KyCCBD

Discussed all the benefits of being a member; support, information, newsletter, advocacy for our children, mini-grant opportunity, journals, and magazines, and reduced registration fee for the Institute and advanced registration for members.

**Action:** Discussion only

Page 2 - KyCCBD General Meeting Minutes - March 3, 2000

**Topic:** Membership Survey

**Action:** Discussion only.

**Topic:** Next Meeting - Institute 2000 Northern Kentucky Convention Center

Barbara Ungvary made a motion to adjourn. Alan Siegel seconded: **Vote: Passed.**

Adjourned: 5:00 p.m.

---

Find the Hidden Membership Number

Somewhere in this issue is a CCBD member's Membership Number. If you find this number and it is yours, please contact Tammy Williams (see the E-Board listing) and you will receive a FREE T-SHIRT from KYCCBD. There will be a new short-sleeve t-shirt available at the institute this year so you will have a choice of short or long sleeves. Good Luck and Happy Hunting.

**Donna Meers' Letter on Behalf of the KYCCBD Executive Board to the Kentucky CEC Executive Board**

1-27-99

Dear KYCEC Executive Board Member,

The Kentucky Council of Children with Behavior Disorders (KY-CCBD) wants to clearly state our position to the Executive Board of

the Kentucky Council for Exceptional Children (CEC) on the adoption of state regulations that relate to the reauthorization of the Individuals with Disabilities Education Act (IDEA).

We are aware that the CEC and the Kentucky Council for Administrators of Special Education (CASE) have stated support for a full and complete acceptance of the Federal Regulations as the regulations for exceptional children in Kentucky. As we understand their position, the reasons for adopting the Federal Regulations are the result of years of over regulation and restrictive interpretation of state and federal regulations by the Kentucky Department of Education. CEC and CASE are appropriately demanding a reduction in unnecessary paper work, returning to teaching and learning as the focus of education, and a reasonable monitoring process that focuses upon student progress and success. We (KY-CCBD) strongly support those demands. There is nothing in previous statements or positions made by our organization or its officers that should be construed to mean otherwise.

KY-CCBD is in agreement with virtually all statements or positions made by CEC and CASE with the exception of one item. As stated previously in a letter to Mike Armstrong in October '99, in a KY-CCBD newsletter published in Fall '99, and in the KY-CCBD Newsletter in January '00, we support retaining the eligibility criteria for Emotional/Behavioral Disabilities developed by the EBD Task Force in 1992. This position is based on the position of National CCBD and professional literature related to the term 'social maladjustment' and identification of students with emotional and behavioral disorders. We have attached a reference list to this letter for your convenience.

The level of frustration felt by educators in their attempts to serve students with emotional and behavioral problems is significant, regardless of which criteria is used. Children and youth with challenging behavior often "elicit fear and anger from their peers, teachers, and administrators. These two emotions are not conducive to sympathy and empathy, and they do not provide motivation to spend time and energy on costly interventions" (Sachs, 1999). Frustration also occurs when one has no idea how to solve a problem or after repeated efforts to solve a problem have failed. We, in KY-CCBD, know these feelings well. We understand how our colleagues, both in the classroom and as administrators, feel frustration and ultimately anger regarding students with such strong objectionable behavior. Many of the problems we all face are not the fault of the children and youth themselves, but with a system that does not come close to meeting the needs of the educators, students, or their families.

Based on our mission, KY-CCBD views their responsibility not only to advocate for the children we serve but also to provide professional development to support teachers and administrators across the commonwealth. IDEA'97 has provisions that are intended to improve services to all students who exhibit challenging behaviors such as provision of positive behavioral supports, functional behavioral assessments/analysis and behavior intervention plans. KY-CCBD will continue to organize the Behavior Institute and behavioral strands at the Programs for Exceptional Children Conference and the CEC Conference to support teachers and administrators who work with children who exhibit challenging behaviors.

As with any issue of such importance to children, there can be strong differences of opinion. Differences in opinion are normal among professionals within the same field, but we believe it is vital that those who disagree respect and treat with dignity any colleagues with whom they may disagree. The commitment to serve and advocate for children and youth with disabilities by members of CEC is a proud standard around which we all can gather. Our ranks are too small and our efforts are too easily diminished if we begin to

focus on our disagreements rather than rally our efforts against the challenges we all face. There is much more in which we agree than disagree. Let us stay united in support of quality educational programs for all children.

Regardless of what the eligibility standards become for the children, KY-CCBD and its membership will continue to support programs that positively effect all children and youth with disabilities and will always work collaboratively with our colleagues in CEC.

Sincerely,

KY-CCBD Executive Board

## **KYCCBD Executive Board**

### **E-Mail Addresses**

(\* ) Indicates voting members

#### **PRESIDENT\***

**Donna Meers**

[donnameers@home.com](mailto:donnameers@home.com)

#### **PRESIDENT ELECT\***

**Mike Waford**

[mikewaford@aol.com](mailto:mikewaford@aol.com)

#### **VICE PRESIDENT\*(Interim)**

**Tammy Williams**

[twilliams@mayfield.k12.ky.us](mailto:twilliams@mayfield.k12.ky.us)

## **KYCCBD Executive Board(continued)**

#### **SECRETARY\***

**LaNell Taylor**

[LANelltayl@aol.com](mailto:LANelltayl@aol.com)

#### **PAST PRESIDENT\***

**Bill Rigney**

[Kvec@hazard.k12.ky.us](mailto:Kvec@hazard.k12.ky.us)

#### **TREASURER\***

**Tom Denton**

Not Available ☹

#### **PUBLICATIONS CO-CHAIRS\***

**Alan Siegel**

[asiegel@fayette.k12.ky.us](mailto:asiegel@fayette.k12.ky.us)

**Susan Isaacs**

[sisaacs@fayette.k12.ky.us](mailto:sisaacs@fayette.k12.ky.us)

#### **MEMBERSHIP CO-CHAIRS**

**Terri York**

Not yet on line ☹

**Tammy Williams**

[twilliams@mayfield.k12.ky.us](mailto:twilliams@mayfield.k12.ky.us)

#### **KDE LIAISONS**

**Dr. Laura McCullough**

[lmccullo@kde.state.ky.us](mailto:lmccullo@kde.state.ky.us)

**Toyah Robey**

[trobey@kde.state.ky.us](mailto:trobey@kde.state.ky.us)

#### **FINANCE CHAIR/REGIONAL REPRESENTATIVE**

##### **COORDINATOR**

**Linda Phillips**

[lphillips@eathlink.net](mailto:lphillips@eathlink.net)

##### **CAN COORDINATOR \***

**Barbara Ungvary**

[bungvary@fayette.k12.ky.us](mailto:bungvary@fayette.k12.ky.us)

##### **HISTORIAN**

Vacant at this time.

## Regional Representatives

### Region 1

**Tammy Davis**  
Todd Co. Brd. of Ed.  
804 South Main St.  
Elkton, KY 42220  
(270) 265-2436

### Region 2

**Mary Ellen Simmons**  
302 Hillcrest Road  
Franklin, KY 42134  
(502) 586-8493

### Region 3

**Marsha Ingram**  
5607 Maryman Rd.  
Louisville, KY 40258  
(502) 937-9377

### Region 4

**Diane Sketch**  
515 East Southern Ave.  
Covington, KY 41015  
(606) 491-3812

### Region 5

**JansJe Huyck**  
134 Howard Avenue 2050  
Mt. Sterling, KY 40353  
(606) 497-9973

### Region 6

**Ben Bryan**  
Stonehenge Apt. A  
Bowling Green, KY 42101  
(270) 782-9240

### Region 7

**Debbie Walker**  
Rt. 2, Box 295  
Olive Hill, KY 41164  
(606) 286-6314

### Region 8

**Cathy Rigney**  
P.O. Box 119  
Hazard, KY 41072  
(606) 439-0684

## The following is a portion of Beverly Johns' acceptance speech for the CEC Outstanding Leadership Award:

What is leadership? Is it supporting ONLY new ideas, paradigm shifts, "knowledge-based" organizations? No, I don't think so.

I share this CEC Outstanding Leadership Award with those who have taught me what true leadership really means:

To my family who taught me that leadership requires a strong work ethic. A leader must work harder and strive to know more than others.

To my CCBD colleagues who taught me that we have no choice but to be deviant and to fight the fight every day until we accomplish our purpose. CCBD taught me that I could speak more forcefully, and that I should speak more forcefully. True leadership is often very lonely because it means consistently trying to convince others that the path they are on, or even more importantly today, that the new path they seek to put us all on is the wrong path.

To my colleagues within DLD who taught me that special education is "specialized" instruction based on the individualized needs of children; NOT the homogenization that is the path now advocated by many within our field.

To my colleagues within the CEC Pioneers who have taught me the importance of our history, a wonderful history: how we fought to obtain a real education for exceptional children and that we must be ever vigilant. But far too many of us do not learn our history or too soon forget it. Many in the name of the new idea, the new paradigm, unknowingly seek to take us to the new utopia that may be just a new name for the disastrous situation that most children with disabilities were in 50 years ago.

To my many friends in Illinois who have taught me the true value of friendship and support. We are now engaged in a great battle in Illinois. Shall we continue our proud history of advocacy for specialized individualized instruction, or shall "All Teachers Teach All Students"?

To the children that I work with every day, many of whom have the most severe behavioral disorders, who remind me of what my work is all about: being the strongest advocate I can be, day after day after day. 574754

Leadership, true leadership, in CEC is much more difficult today than it was 30 years ago when we were mostly united in our goals. I still remember one of my first students - Sally - coming to school for the first time when she was 10 years old because until Illinois passed a law that said she had the right to go to school, she was not allowed in the school house door. 20 years ago when I chaired CEC's Governmental Relations Committee during the attempts to de-mandate, deregulate, and block grant, we worked together and we won.

An important political lesson I have learned is that there are some things that you can NOT compromise on. One is Free Appropriate Public Education. All children deserve the right to go to school. Period. Another is being a special educator. I am a special educator. I am not simply a collaborator, or an inclusion facilitator, or an all around jack-of-all-trades: I am somebody. I am proud to have the greatest job in the world. I am a special educator.

Today the challenge of leadership is the most difficult – our own field is divided. Some are under the perception that all students can be served in regular classes, some who succumb to the pressure to save money at the expense of children (or who are fooled by those that say they are really acting in the best interests of all children), some who do what will get them ahead professionally, some who want change for change's sake ignoring our history, and some who jump on politically correct bandwagons rather than basing decisions on substantial data AND research AND practical experience.

Jim Kauffman said it well: "In some cases, our colleagues are advocating radical restructuring and the abandonment of special education as a distinctive,

separable part of public schooling with little serious attention to how exceptional children fared in our schools when general and special education were indistinguishable."

He also said, "People who are apologetic about their own existence often self-destruct. They may accomplish their own demise in a variety of ways, including their imagined transformation to a new level of existence. I would like to see us become unapologetic about our function, our identity, our distinctiveness, our visibility."

Some of you know that there are forces within Illinois seeking to demolish the system of special education as we know it, and it has become an all out battle. I was feeling discouraged one day a couple of weeks ago when I got a call from a very good friend who brought me back into focus - she is the parent of an adult with a severe learning disability, and is now the grandparent of a child with a learning disability. She said, "I will work until I go to my grave to see that special education delivered by specialized LD teachers is provided to my grandson and his children."

My pledge to you is that I will go to my grave fighting for what special education really is - specialized instruction - in Sam Kirk's words: what makes special education special. True leadership in special education is fighting that fight.

I have a sign up in our school for our students and staff that says, "You are not finished when you lose, you are finished when you quit." We cannot afford to be complacent, to simply accept whatever new idea is in vogue. Our children need us, and our teacher colleagues need us. I will not quit and ask that all of us never quit in our quest for real SPECIAL education, truly specialized individualized instruction for the children we serve. Thank you very much for the CEC Outstanding Leadership Award. I will do everything I can, in every way that I can, to continue to deserve your recognition.

---

## CALL FOR NOMINATIONS

With the untimely resignation of Dr. Dana Haradar from the position of Vice-President, it was necessary for Mike Waford to move up to the position of President-Elect. Tammy Williams was also named interim Vice-President to fill the un-expired term. Therefore we have an unusually full slate to be elected for the 2000-2001 year. The following positions are to be open for election for next year:

President-Elect

- Must be a member on good standing of KYCCBD for one year prior to election.
- Serve a one-year term with a commitment to an additional two years as President and Past President.
- Be prepared to take over the functions and duties in case of absence or disability of the President.
- Serve as a member of committees of KYCCBD
- Work closely with the President and take on joint decided responsibilities.
- Keep current on all decisions and activities of KYCCBD so that a smooth transition can take place.
- Attend, whenever possible, meetings for the leadership training and information sharing.
- Help creatively plan a program of activities for the year.
- Assume additional duties designated by the President or the By-Laws.
- Familiarize and provide successor with materials and activities of the President-Elect.

### Vice President

- Must be a member on good standing of KYCCBD for one year prior to election.
- Serve a one-year term with a commitment to an additional three years as President-Elect, President and Past President.
- Study and be familiar with Robert's Rules of Order and preside as parliamentarian at all meetings.
- Work on committees of KYCCBD.
- Prepare for future presidency by learning and participating fully with the President and President-Elect as they implement their officer roles.
- Participate with other officers and board members in decision making.
- Assume additional; duties designated by President and/or By-Laws.
- Familiarize and provide successor with materials and activities of the Vice-President.

### Secretary

- Must be a member on good standing of KYCCBD for one year prior to election.
- Serve a two-year term of office.
- Prepare meeting minutes.
- Complete correspondence as necessary to KYCCBD.

- In the event a board member is absent, the recording secretary will be responsible for mailing information and materials to the board member.
- Assume duties designated by the president or By-Laws.
- Familiarize and provide successor with official minutes materials and activities of the recording secretary.

If you wish to run for one of the available offices or you would like to nominate someone for one of the positions, you may do so in two ways:

1. You may call Bill Rigney at (606) 251-3360 or e-mail him at: [Kvec@hazard.k12.ky.us](mailto:Kvec@hazard.k12.ky.us) or
2. You may attend the General Meeting at the Summer Institute and present your nomination at that time.

We look forward to seeing you at the Summer Institute.

Kentucky Council for Children  
with Behavioral Disorders  
c/o Alan Siegel  
3260Tudor Drive  
Lexington, KY 40503

Non-Profit  
U.S. POSTAGE  
PAID  
Lexington, KY  
Permit No. 1042